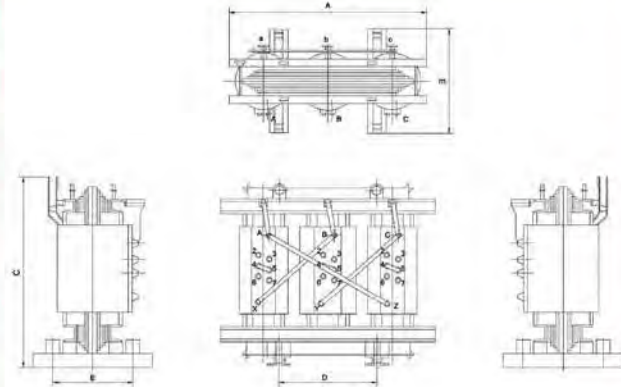


STANDARD OF LOSSES, DIMENSIONS AND WEIGHTS RESIN INSULATED
TYPE TRANSFORMER CLASS F, IP-00

IP-00

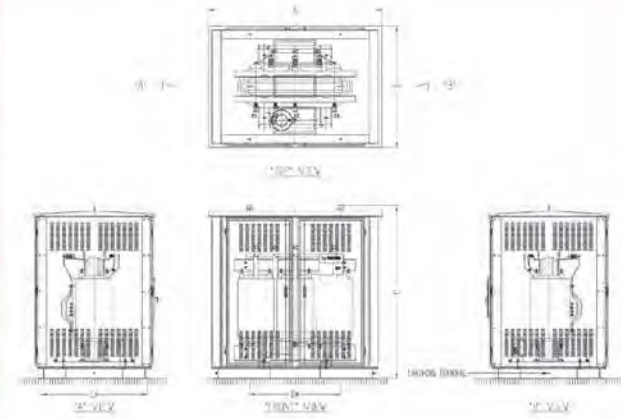
Capacity kVA	Dimension Approximately (mm)					Technical Parameter				Total Weight (kgs)
	A	B	C	D	E	No Load Losses (Watt)	Load Losses (Watt)	Total Losses (Watt)	Impedance (%)	
100	1210	1070	1110	820	960	675	2200	2875	4.0	770
160	1290	1020	1220	820	960	700	2450	3150	4.0	1070
200	1450	1020	1215	820	960	900	3000	3900	4.0	1240
250	1480	1020	1250	820	960	1100	3450	4550	4.0	1380
315	1480	1070	1320	820	960	1150	4300	5450	4.0	1550
400	1540	1070	1410	820	1030	1250	4750	6000	4.0	1830
500	1540	1070	1560	820	1030	1450	6500	7950	4.0	2070
630	1570	1070	1710	820	1030	1600	8000	9600	4.0	2380
800	1620	1070	1735	820	1030	1800	9200	11000	4.5	2630
1000	1780	1070	1750	820	1030	2050	10300	12350	5.0	3130
1250	1800	1070	1940	820	1030	2300	12000	14300	5.5	3530
1600	1950	1070	1980	1100	1030	2700	14700	17400	6.0	4300
2000	2090	1070	1995	1100	1030	3250	16500	19750	6.0	5210
2500	2290	1270	2060	1100	1230	4000	19500	23500	7.0	6050
3150	2500	1270	2175	1100	1230	5300	21000	26300	7.5	7680
3500	2400	1270	2185	1100	1230	5300	22500	27800	7.5	8540
4000	2630	1270	2240	1100	1230	5500	24000	29500	7.5	9400
6000	2720	1675	2100	1470	1635	9500	33500	43000	7.5	11850



STANDARD OF LOSSES, DIMENSIONS AND WEIGHTS
RESIN INSULATED TYPE TRANSFORMER CLASS F with ENCLOSURE, IP-20

With IP-20 enclosure

Capacity kVA	Dimension Approximately (mm)					Technical Parameter				Total Weight (kgs)
	A	B	C	D	E	No Load Losses (Watt)	Load Losses (Watt)	Total Losses (Watt)	Impedance (%)	
100	1810	1690	2350	1520	1505	675	2200	2875	4.0	1350
160	1890	1690	2460	1520	1505	700	2450	3150	4.0	1680
200	2050	1690	2455	1520	1505	900	3000	3900	4.0	1890
250	2080	1690	2490	1520	1505	1100	3450	4550	4.0	2040
315	2080	1740	2560	1520	1555	1150	4300	5450	4.0	2230
400	2140	1740	2650	1520	1555	1250	4750	6000	4.0	2540
500	2140	1740	2710	1520	1555	1450	6500	7950	4.0	2850
630	2170	1740	2950	1520	1555	1600	8000	9600	4.0	3160
800	2220	1740	2975	1520	1555	1800	9200	11000	4.5	3430
1000	2380	1740	2990	1520	1555	2050	10300	12350	5.0	3970
1250	2400	1740	3180	1520	1555	2300	12000	14300	5.5	4410
1600	2550	1740	3220	1800	1555	2700	14700	17400	6.0	5230
2000	2690	1740	3235	1800	1555	3250	16500	19750	6.0	6180
2500	2890	1940	3300	1800	1755	4000	19500	23500	7.0	7150
3150	3100	1940	3415	1800	1755	5300	21000	26300	7.5	8980
3500	3000	1940	3425	1800	1755	5300	22500	27800	7.5	9840
4000	3230	1940	3480	1800	1755	5500	24000	29500	7.5	10700
6000	3280	2220	2150	1470	1635	9500	33500	43000	7.5	13250



PRODUCT CATALOGUE
CAST RESIN TRANSFORMERS

HEAD OFFICE
PT. TRAFINDO PRIMA PERKASA
Jl. Hayam Wuruk 4/FX
Jakarta 10120, Indonesia
Phone: +62 21 385 0703, 345 1384
Fax: +62 21 385 0702, 386 1869

FACTORY - TRANSFORMER
Jl. Siliwangi Kel. Alam Jaya, Kec. Jatiuwung
Tangerang, Banten, Indonesia
Phone: +62 21 590 3801, 590 3802
Fax: +62 21 590 0616

For sales inquiries:
marketing@trafindonesia.com

Visit us www.trafindonesia.com

FACTORY - CTVT
Jl. Siliwangi Kel. Alam Jaya, Kec. Jatiuwung
Tangerang, Banten, Indonesia
Phone: +62 21 5931 9002, 5931 9005
Fax: +62 21 5931 9001

For sales inquiries:
sales.ctvt@trafindonesia.com



TRAFINDO CAST RESIN TRANSFORMERS



The cast resin (dry type) transformers are well known for their high quality and easy maintenance. The use of cast resin transformers is highly recommended for important installations such as airports and government buildings, and it is a must for high rise buildings. More customers are accepting these dry type transformers due to the ease of use and our competitive pricing. As the Asian economy flourishes, the potential of cast resin transformers is growing accordingly, and PT. Trafindo Prima Perkasa is proud to have been the first manufacture of cast resin transformers in Indonesia and will continue to be the country's foremost manufacture of these transformers.

Trafo cast resin (tipe kering) dikenal karena kualitasnya yang tinggi dan pemeliharaannya sangat mudah. Pemakaian trafo kering sangat dianjurkan untuk lokasi-lokasi penting, seperti bandara, gedung pemerintahan, dan terutama untuk gedung-gedung bertingkat. Namun selain daripada lokasi-lokasi tersebut, minat untuk menggunakan trafo kering produk kami semakin bertambah karena pemakaiannya yang mudah dan harga yang kompetitif. Dengan pertumbuhan ekonomi yang pesat, permintaan untuk trafo kering juga berkembang. PT Trafindo Prima Perkasa bangga sebagai pabrik trafo kering pertama di Indonesia, dan bertekad untuk menjadi pabrik transformator terbaik.

Features

- **Environmentally safe**
No emission of all or gases
- **Low noise**
Core coated with epoxy resin leads to considerable noise reduction
- **No Partial Discharge**
Free of partial discharge at least up to 1.2 times the rated voltage
- **impulse High strength**
Withstands impulse level up to 200kV
- **Fire resistant**
Cast resin coils are self fire-extinguishing
- **Maintenance Free**

Fitur

- Ramah Lingkungan
- Tingkat kebisingan rendah
- Tanpa Partial Discharge
- Ketahanan petir yang tinggi
- Tahan api
- Bebas perawatan

Application

Their safety and maintenance-free advantages make cast-resin transformers particularly suitable for high-rise buildings and other highly developed installations.

Trafindo cast resin transformers are used in:

Government Buildings:

- House of Representatives (MPR/DPR)
- Bank Indonesia
- Balai Kota Jakarta

Hotels & Apartments:

- Ritz-Carlton Jakarta
- Shangrila Hotel Condominium
- The Grand Hyatt
- The Holiday Inn
- Four Season Hotel

Penggunaan

Karena faktor keselamatan dan kemudahan pemeliharaan, trafo jenis kering sangat sesuai untuk penggunaan pada gedung bertingkat dan instalasi penting lainnya.

Office Buildings & Shopping Centers:

- Plaza Indonesia
- Grand Indonesia
- Sudirman Plaza
- Menara Karya
- Lotte Mart
- Kuningan City

Other Installments:

- Swiss-German University
- Soekarno-Hatta International Airport



Standards

Trafindo cast resin transformers conform to IEC 60076-11 standards. However, we can also meet the requirements of other standards upon request including: ANSI/IEEE and others.

Specification

Rated Voltage

HV Coil: up to 36kV
LV Coil: up to 600V

Power Capacity

up to 6 MVA (3-phase)
Other % impedance voltages are available

Standar

Trafo kering Trafindo memenuhi standar IEC60076-11 dan bisa juga memenuhi standar lainnya sesuai permintaan.

Temperature Class (IEC 726)

HV and LV Coil: F Class
Other Classes are available

Conductor

Copper
Aluminium